

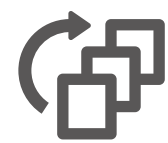


300 Mbps Wi-Fi Router

300 Mbps Multi-mode Router



TL-WR820N

 Router / Access Point /
Range Extender / WISP Modes

 Easy Setup by
Tether App

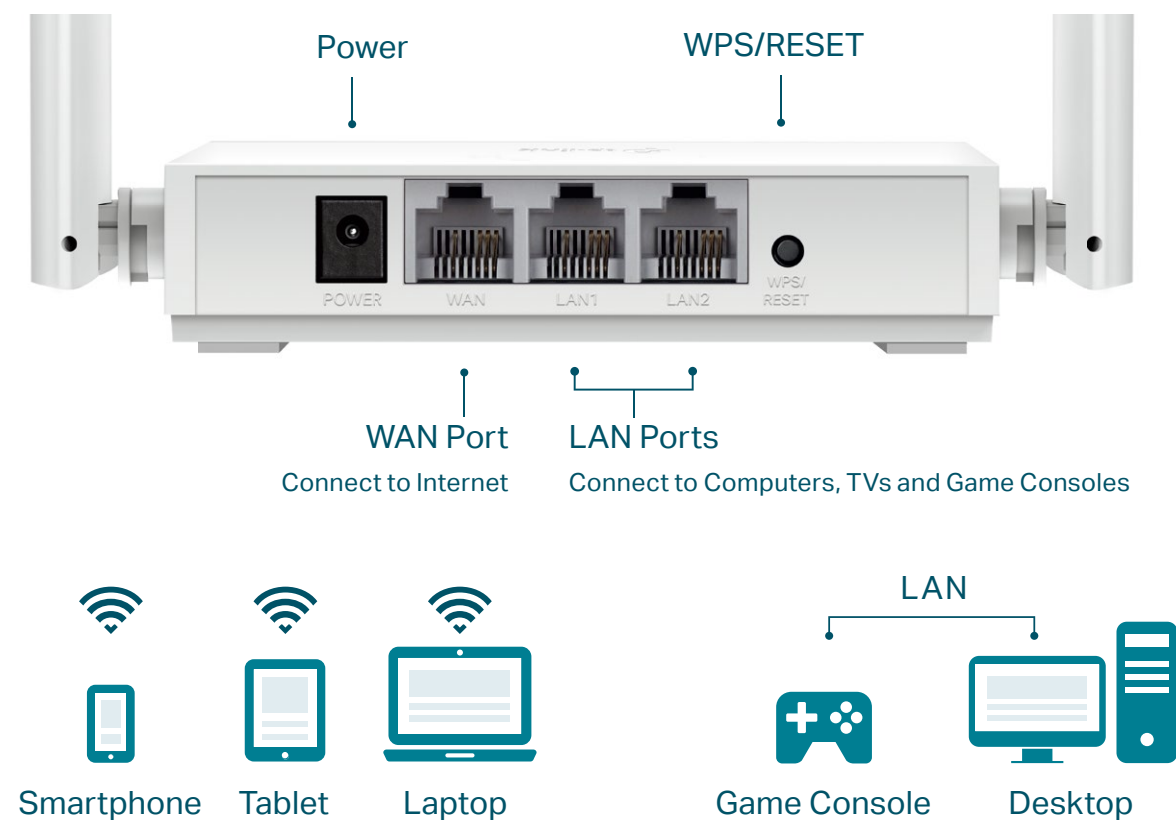
 5dBi
Antennas

 IPv6
Supported

Highlights

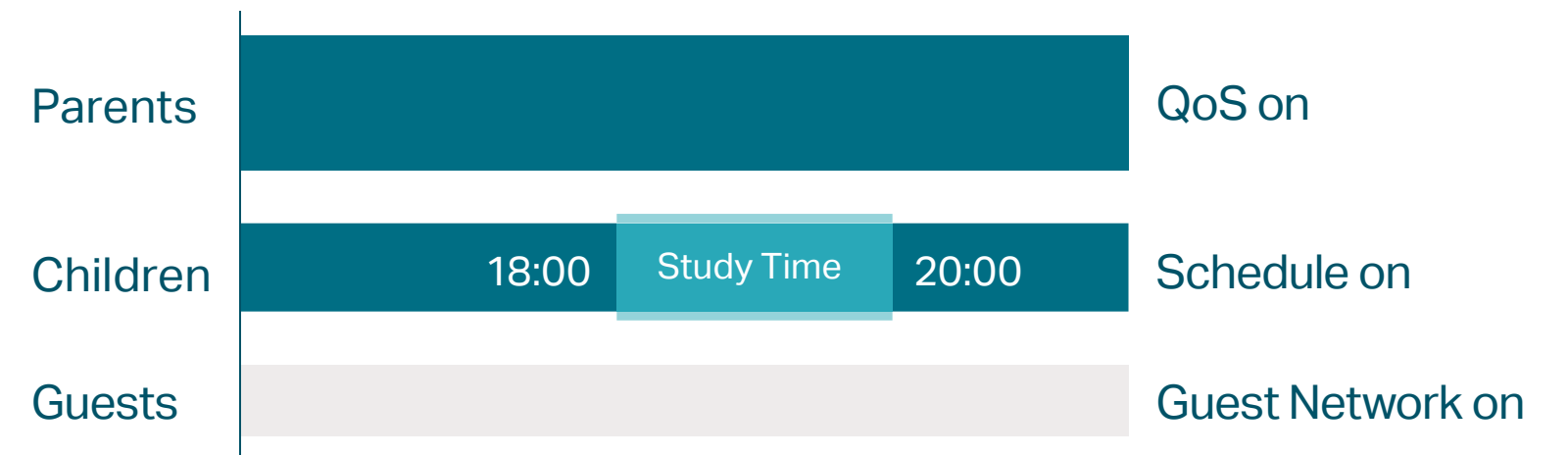
Reliable Network Connection

Enhance wireless signal transmission and reception with TL-WR820N. Equipped with 5 dBi antennas and 2 high-speed Ethernet ports to provide reliable Wi-Fi and wired connections throughout medium-sized homes. Let the whole family enjoy fast Wi-Fi on every phone, tablet, and laptop.



Versatile Management

Built-in tools make it easier to manage your home network, including scheduling internet access for specific devices, blocking content, or setting a priority level. The independent guest network helps secure private data from guests' access.



Highlights

Four Modes in One

Router Mode (Default)

Connect to the Ethernet to instantly create a private wireless network and share internet access to all your Wi-Fi devices



Range Extender Mode

Boost the existing wireless coverage in your room



Access Point Mode

Transform your existing wired network to a wireless one



WISP Mode

Connect to the ISP network wirelessly in areas without wired service

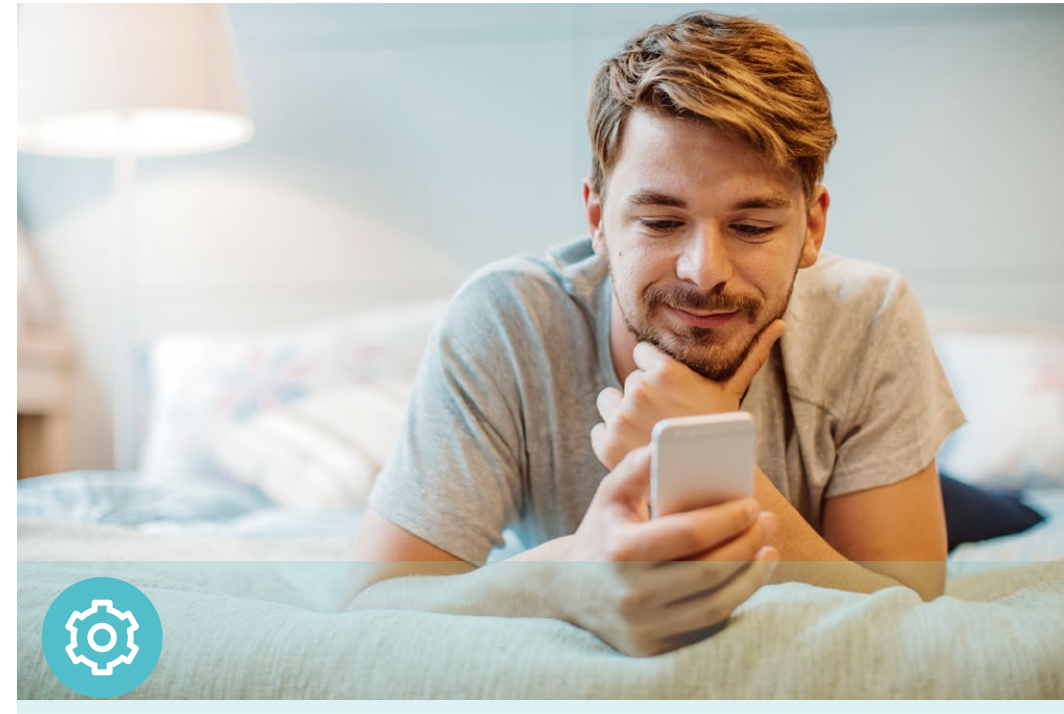


Features



Reliability

- 802.11n – Backward compatible with 802.11b/g products
- Quality of Service – prioritizes devices to give faster performance where you need it
- Access Control – Establish a whitelist or blacklist to allow or block certain devices from accessing the internet
- Parental Controls – allow parents to establish regulated access for children



Ease of Use

- Intuitive Web UI– Ensures quick and simple installation without hassle
- Fast Encryption – One-touch wireless security encryption with the WPS button
- Hassle-free Management with Tether App – Network management is made easy with the TP-Link Tether App, available on any Android or iOS device



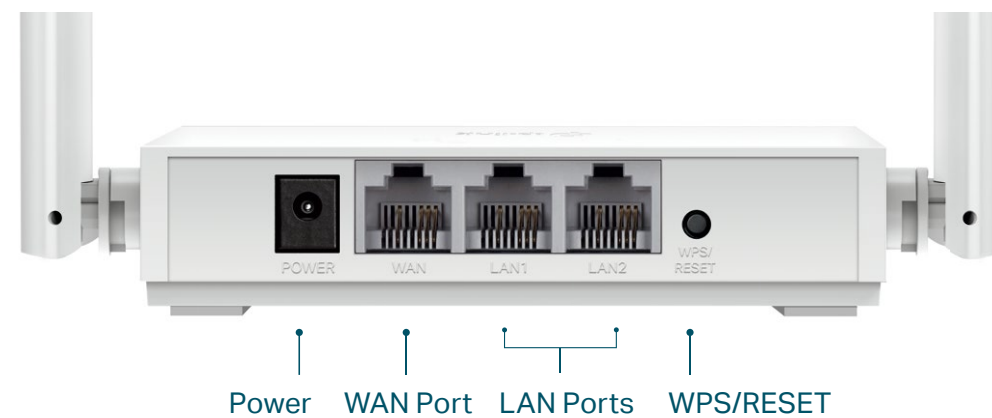
Speed

- Wireless N Speed – 300 Mbps Wi-Fi speed meets your daily internet needs
- High-speed Ethernet Ports: Provide reliable Wi-Fi and wired connections

Specifications

Hardware

- Ethernet Ports: 2 10/100 Mbps LAN Ports, 1 10/100 Mbps WAN Port
- Buttons: WPS/Reset Button
- Antennas: 2 Fixed Omni Directional Antennas
- External Power Supply: 5VDC / 0.6A
- Dimensions (W x D x H): 4.5 x 4.2 x 0.96 in. (115 x 106.7 x 24.3 mm)



Wireless

- Wireless Standards: IEEE 802.11n, IEEE 802.11g, IEEE 802.11b
- Frequency: 2.412~2.472 GHz
- Signal Rate:
 - 11n: Up to 300 Mbps(dynamic)
 - 11g: Up to 54 Mbps(dynamic)
 - 11b: Up to 11 Mbps(dynamic)
- Reception Sensitivity:
 - 270M: -70dBm@10% PER
 - 130M: -74dBm@10% PER
 - 108M: -74dBm@10% PER
 - 54M: -77dBm@10% PER
 - 11M: -87dBm@8% PER
 - 6M: -90dBm@10% PER
 - 1M: -98dBm@8% PER
- Wireless Function: Enable/Disable Wireless Radio, WMM, Wireless Statistics
- Wireless Security: WEP, WPA / WPA2, WPA-PSK / WPA2-PSK

Specifications

Software

- Operation Modes: Wireless Router, Range Extender, Access Point, WISP
- WAN Type: Dynamic IP, Static IP, PPPoE, PPTP(Dual Access), L2TP(Dual Access)
- DHCP: DHCP Server, DHCP Client List, Address Reservation
- Quality of Service: WMM, Bandwidth Control
- NAT Forwarding: Port Forwarding, Port Triggering, UPnP, DMZ
- Dynamic DNS: DynDns, NO-IP
- Firewall Security: SPI Firewall, IP and MAC Address Binding
- Protocols: IPv4, IPv6
- Management: Parental Controls, Access Control, Local Management, Remote Management
- Guest Network: 2.4 GHz Guest Network

Others

- Certification
CE, RoHS
- System Requirements
Microsoft Windows 10/8.1/8/7/Vista/XP/2000/NT/98SE, MAC OS, NetWare, UNIX or Linux
Internet Explorer 11, Firefox 12.0, Chrome 20.0, Safari 4.0, or other Java-enabled browser
Cable or DSL Modem
Subscription with an internet service provider (for internet access)
- Environment
Operating Temperature: 0°C~40°C (32°F ~104°F)
Storage Temperature: -40°C~70°C (-40°F ~158°F)
Operating Humidity: 10%~90% non-condensing
Storage Humidity: 5%~90% non-condensing
- Package Contents
Wireless Router TL-WR820N
Power Adapter
RJ-45 Ethernet Cable
Quick Installation Guide



For more information, please visit

https://www.tp-link.com/products/details/?model=TL-WR820N_V2

or scan the QR code left

Specifications are subject to change without notice. TP-Link is a registered trademark of TP-Link Technologies Co., Ltd. Other brands and product names are trademarks or registered trademarks of their respective holders. Copyright ©2020 TP-Link Technologies Co., Ltd. All rights reserved.

*Maximum wireless signal rates are the physical rates derived from IEEE Standard 802.11 specifications. Actual wireless data throughput and wireless coverage are not guaranteed and will vary as a result of network conditions, client limitations, and environmental factors, including building materials, obstacles, volume and density of traffic, and client location.

www.tp-link.com

TP-Link 300Mbps Wi-Fi Router TL-WR820N